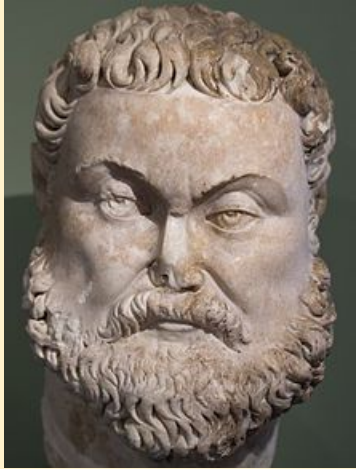


Walk-in Work - August 23, 2021

1. How did the Emperor Diocletian solve the issue of ruling such a large empire?



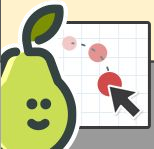
Drag the purple star to the correct answer:

A) He didn't change anything. He knew he would be such a great ruler, he could totally handle any problems that would come up.

B) He decided he didn't want to be emperor and stepped down from the position.

C) He divided the empire into two parts, the eastern and western empires. He then chose one of his colleagues, Maximian, to be co-emperor.

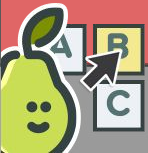
D) He decided to hire a management company to give him advice.



Students, drag the icon!



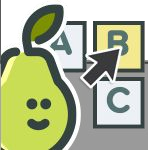
2. T/F: The Roman Empire, at its peak, was over 3,000,000 square miles in size and encompassed parts of modern day Europe, Africa, Egypt, Syria, Turkey, and more.



Students choose an option

Pear Deck Interactive Slide
Do not remove this bar

3. During Roman times, lots of trade occurred through the:



Students choose an option

Monday, August 23, 2021 - 7th Grade Agenda

Essential Question(s):

- *How did the Roman Empire go from being polytheistic to a Christian empire?*
- *How did Christianity begin in the Roman Empire?*

- 1) Finish notes on how Rome became a Christian empire.
- 2) Complete summary from notes.
- 3) If time: Lesson 2 Intro video, reading textbook pgs. 20-22
- 4) Complete pg. 16 in workbook